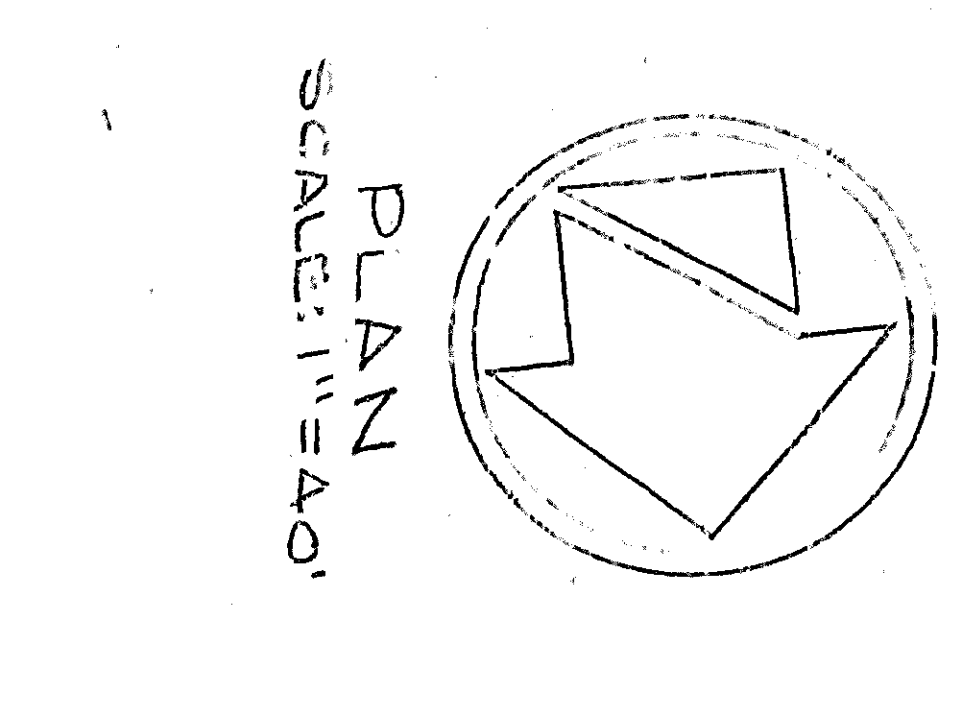
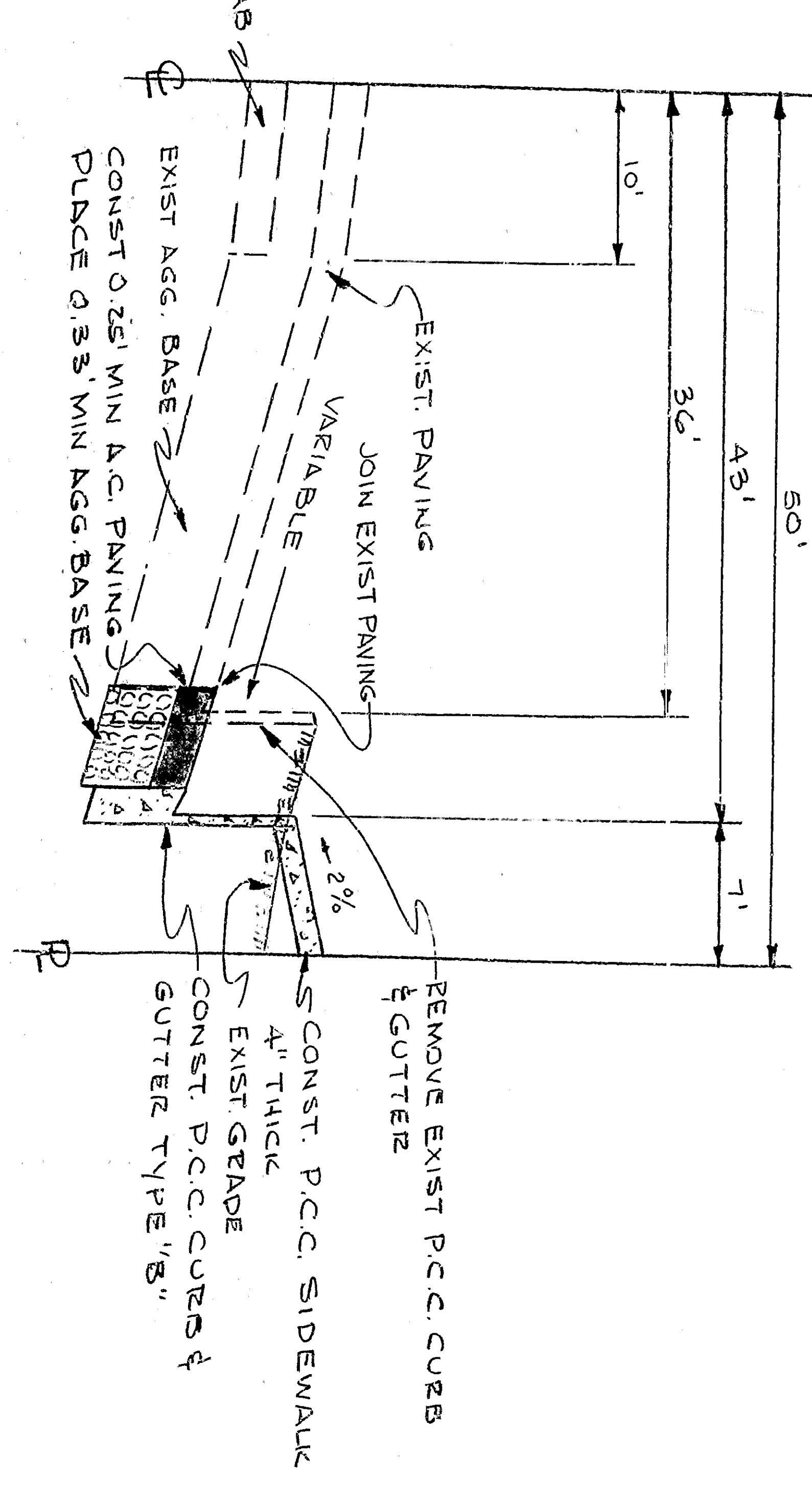
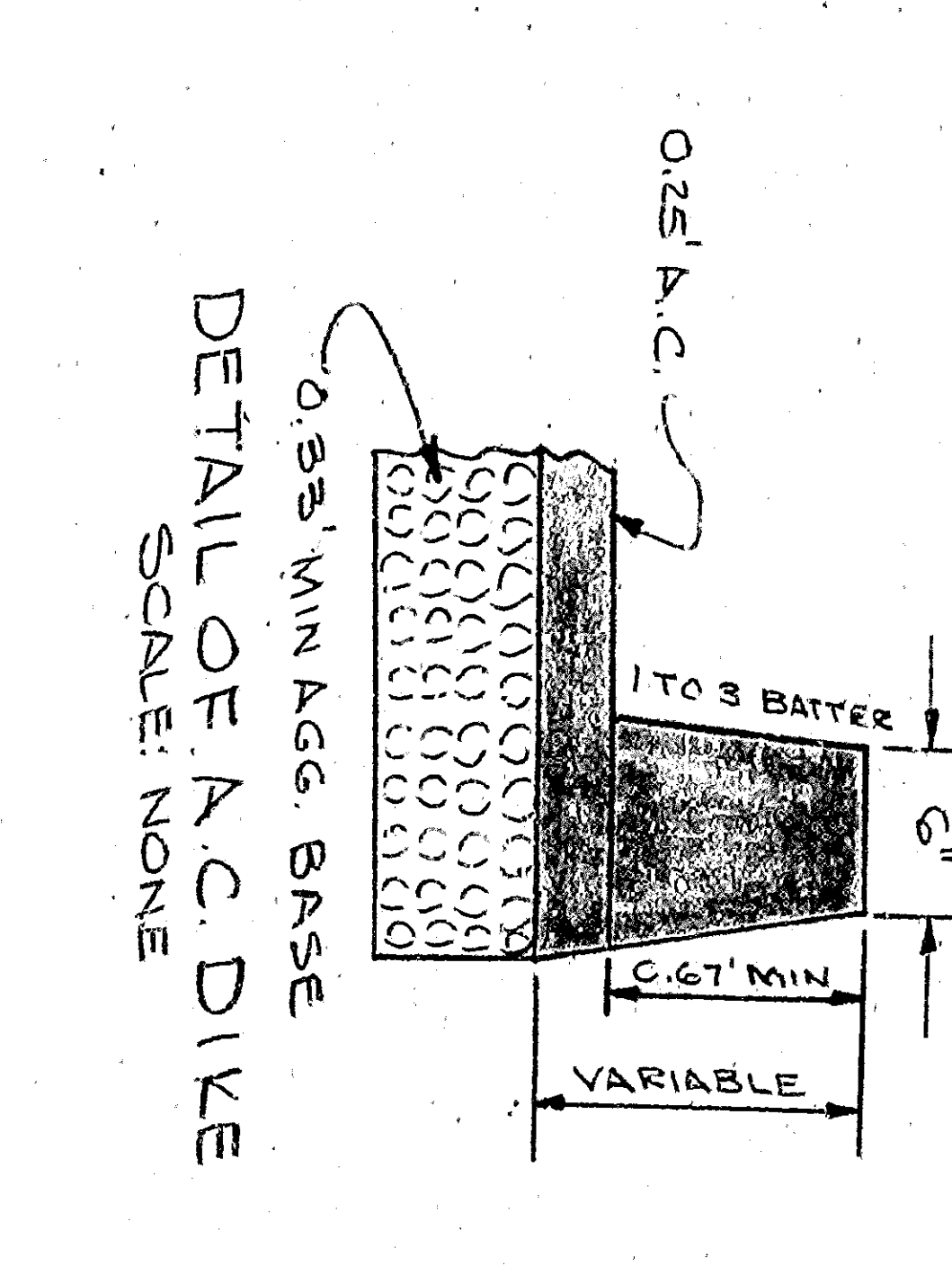
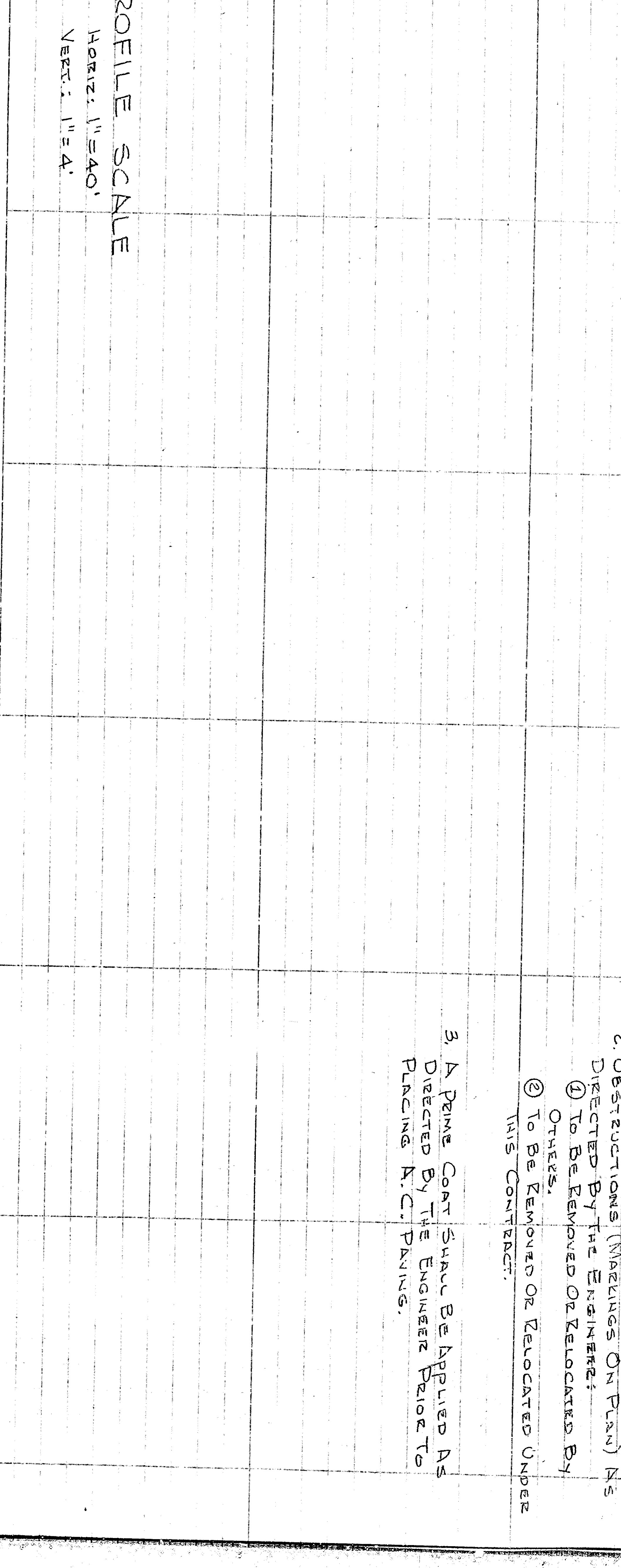


GENERAL NOTES:

1. All Work Embodied On This Plan To Be Done In Conformity With Application Provisions Of STANDARD SPECIFICATIONS NO. 2711 AND STANDARD DRAWING NO. 221 ON THE PARTS OF THE CITY ENGINEER.
2. OBSTRUCTIONS (WHEELS ON PAV) NOT DIRECTED BY THE ENGINEER:
 - ① To Be Removed Or Relocated By Owner.
 - ② To Be Removed Or Relocated Under HIS CONTRACT.
3. A Permit Copy Shall Be Applied As Directed By The Engineer Prior To PAVING, K.C.PAVING.



END EXIST. P.C.C. CURB & GUTTER

① BEGIN EXIST. A.C. BEEM

FUTURE P.C.C. CURB & GUTTER TYPE B TO BE CONSTRUCTED BY OTHERS

② END EXIST. A.C. BEEM

③ POLE # 1559152 E

④ BEGIN EXIST. P.C.C. CURB & GUTTER

⑤ POLE # 1559153 E

⑥ POLE # 1559154 E

CONDUIT PIPE

⑦ VAULT VENT PIPE (6" STEEL)

⑧ 6"x6" P.C.C. ELECT. VAULT

⑨ A.C. DRIVEWAY

⑩ VAULT VENT PIPE (6" STEEL)

⑪ POLE # 1559154 E

A.C. DRIVEWAY

APPROVED: [Signature]

CITY ENGINEER

CITY OF SAN BERNARDINO

IMPROVEMENT PLAN

CHARLES GERARDIEN, CIVIL ENGINEER

DESIGNED BY

3-4-79

SHEET 1 OF 1 SHEETS

RECOMMENDED BY

18

1976

DEPARTMENT OF ENGINEERING

CITY OF SAN BERNARDINO

IMPROVEMENT PLAN

CHARLES GERARDIEN, CIVIL ENGINEER

DESIGNED BY

3-4-79

SHEET 1 OF 1 SHEETS

RECOMMENDED BY

18

1976